

**PENTAX**

**DSmobile 600**



**User's Guide**

**PENTAX**

## CE Conformity and FCC Statement .....

**CE** This equipment has been tested and found to comply with the limits of the European Council Directive on the approximation of the member states relating to electromagnetic compatibility according to EN 55022/55024 Part 15 B

**FCC** This equipment has been tested and found to comply with the limits for a Class B digital device, pursuant to Part 15 of the FCC Rules. These limits are designed to provide reasonable protection against harmful interference in a residential energy and, if not installed and used in accordance with the instructions, may cause harmful interference to radio communications.

However, there is no guarantee that interference will not occur in a particular installation. If this equipment does cause harmful interference to radio or television reception, which can be determined by turning the equipment off and on, the user is encouraged to try to correct the interference by one or more of the following measures:

- Reorient the receiving antenna
- Increase the separation between the equipment and receiver
- Move the computer away from the receiver
- Connect the equipment into an outlet on a circuit different from that to which the receiver is connected

### *Trademarks*

Adobe ACROBAT and Adobe Photoshop are registered trademarks of Adobe Systems Incorporated in the United States and/or other countries. DSmobile is a registered trademark of Pentax of America, Inc. PageManager is a registered trademark of NewSoft America Inc. Post-It is a registered trademark of 3M Company. Windex is a registered trademark of S. C. Johnson Company. Windows, Windows Me, 2000 & XP and Microsoft are registered trademarks of Microsoft Corporation. Wite out is a registered trademark of Wite out Products, Inc.

**Contents .....**

CE conformity and FCC Statement ..... ii

What's Included With This Package ..... iv

Welcome - Introduction to Your DSmobile 600 Scanner ..... 1

Installation of Software & Hardware ..... 2

    Installing Hardware ..... 4

    Initial Calibration of DSmobileSCAN..... 6

Using Your Scanner ..... 7

Using Your Scanning Software..... 8

    DSmobileSCAN ..... 8

    TWAIN ..... 10

    PageManager ..... 11

    TWAIN for Apple MAC OSX ..... 11

Tips & Cautions ..... 12

Technical Support ..... 13

Product Warranty Information ..... 13

**What's Included With This Package .....**



**DSmobile 600 Scanner**



**User Manual  
Printable from CD only**



**USB Cable (6ft.)**



**Carrying Sack**



**Installation Guide**



**Installation CD**



**Photo Sleeves (2) for scanning pictures,  
Calibration sheets (2), Cleaner sheet (1)**

## ***Welcome – Introduction to Your DSmobile Scanner.....***

**Congratulations on purchasing a DSmobile 600 document scanner!**

**We have designed this product to provide you with a simple but effective tool to capture, manage, and archive documents of many types. We encourage you to read this short, but important *User’s Guide* carefully.**

**Your DSmobile 600 scanner installation CD provides compatible Windows® drivers which have been certified by Microsoft and tested to be in compliance with their Windows 2000 (SP4) and Windows XP (SP2) operating systems. This product features a TWAIN 1.9 compatible driver that will work with any of your TWAIN-compliant imaging applications. This TWAIN driver is automatically installed for the DSmobile 600 when you load the Windows drivers. If you experience any difficulty with any of these drivers, please check our website [www.pentaxtech.com](http://www.pentaxtech.com) to verify that you are using the latest version.**

**For your convenience, a version of PageManager® for Windows software is included on the installation CD. This software program allows you to scan and organize your digital files with the ability to view, edit, send, and save them. It will also output various selectable file formats, whereas DSmobileSCAN outputs Adobe PDF files only. At the end of the software installation process, you can install PageManager software by navigating to the CD root directory, finding the PageManager 7 folder, and double-clicking on the “setup.exe” file. Please follow the on-screen instructions. For help with how to use this software, please use the help facility within PageManager.**

**Scanning using Apple Mac OSX is supported by a Mac TWAIN driver only. This driver is not included in the software CD for Windows. You can download the Mac OSX driver from [www.pentaxtech.com](http://www.pentaxtech.com).**

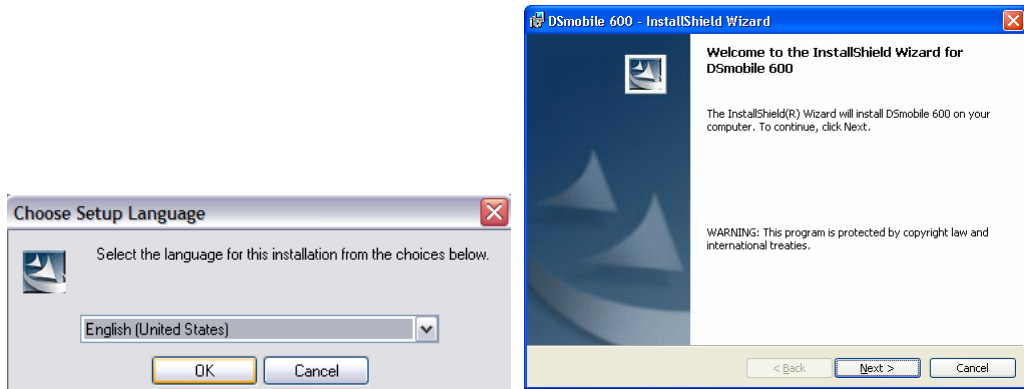
# Installation of Software & Hardware .....

FOR BEST RESULTS, PLEASE INSTALL THE SOFTWARE FROM THE CD PROVIDED BEFORE PLUGGING IN YOUR SCANNER.

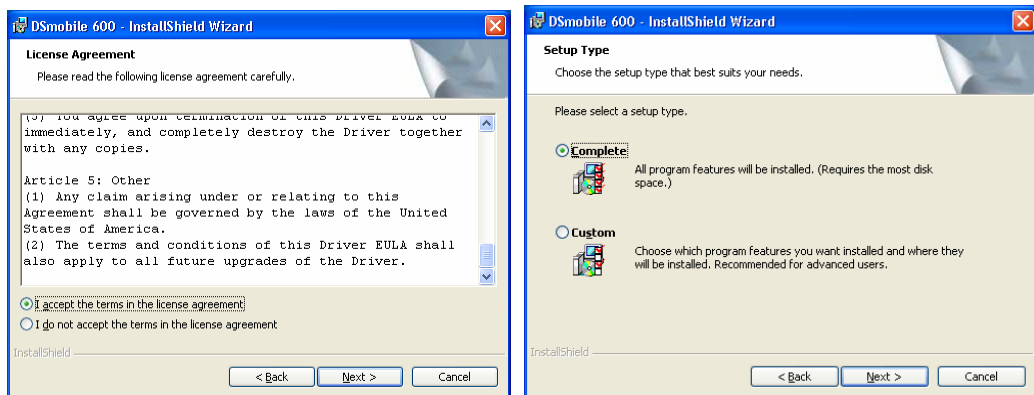
**Note:** As a precaution, a RED warning label has been placed on the USB cable to remind you to install the software CD first. Please remove this warning label prior to plugging in the scanner cable after you have installed the software.

## Installing Software

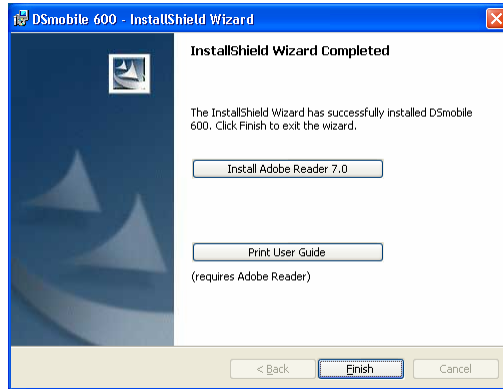
**1. Insert the installation CD that came with your DSmobile 600 scanner into your computer. The installation program should begin automatically.**



**2. If the installation does not start automatically, please double-click the MY COMPUTER icon on your Windows desktop, then double-click the CD icon. If this installation program does not begin, then double-click the SETUP icon.**



**3. Follow the on-screen step-by-step InstallShield Wizard instructions to install the COMPLETE scanner drivers and DSmobileSCAN software featuring the ADOBE® Scan-to-PDF technology on your computer.**



4. At the end of the installation process, you will be given the option of either installing the ADOBE Acrobat Reader 7.0 for on-line viewing or printing the user's guide. You may also click on Finish to continue without installing Acrobat or printing the user's guide.
5. If you do not already have ADOBE Reader 7.0 installed, you should select the "Install Adobe Reader 7.0" button before you click FINISH. You may also print the User's Guide after installing the Adobe Reader for your future reference.

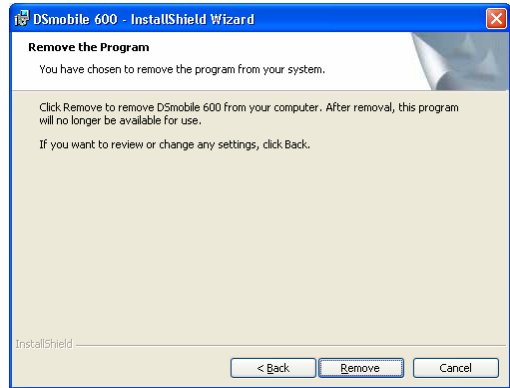
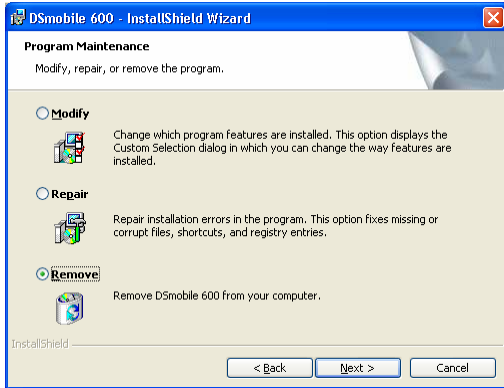
If you choose to install ADOBE Reader 7.0, you will see the screen below. Please follow the instructions to install the software.



6. At this point you have an opportunity to install the PageManager software. Please browse to the CD root directory and find the PageManager 7 folder. Double click to open the folder and click on the "setup.exe" file. Follow the on-screen instructions to install PageManager 7.

**Note:** After you have completed all software installations, we strongly recommend that you remove the CD and restart your computer even though you are not requested by Windows to do so.

**7. If you should need to un-install the software later, you simply insert the original installation CD and run the setup again. At this time you will be given three options. Select the REMOVE option, click NEXT, and then click REMOVE. All previously installed DSmobile 600 software will be removed from your computer with the exception of the Adobe Reader 7.0.**



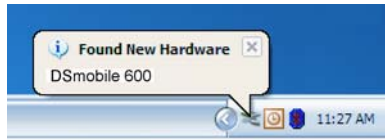
## **Installing Hardware**

**After you have installed the software, removed the CD, and restarted your computer:**

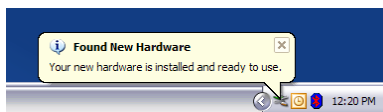
- 1. Connect the USB cable to the scanner and to a USB port on your computer as shown below (either to a desktop or laptop computer). If necessary, please check your computer's user guide to identify the USB ports available and their locations.**



2. Under Windows 2000 and XP operating systems, the computer will automatically detect a new hardware device and, during the initial installation, advise you to follow the Hardware Wizard installation (see below).



3. Follow the step-by-step Wizard instructions and finish your hardware installation.
4. When you finish your Hardware Wizard Installation, the computer will automatically detect the new hardware device installed and it will be ready for use.



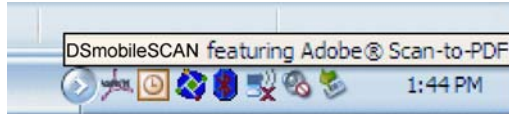
**Note:** Under Windows ME, you may be required to browse to the installation CD where Windows will retrieve additional driver components to complete the installation.

# Initial Calibration of DSmobileSCAN .....

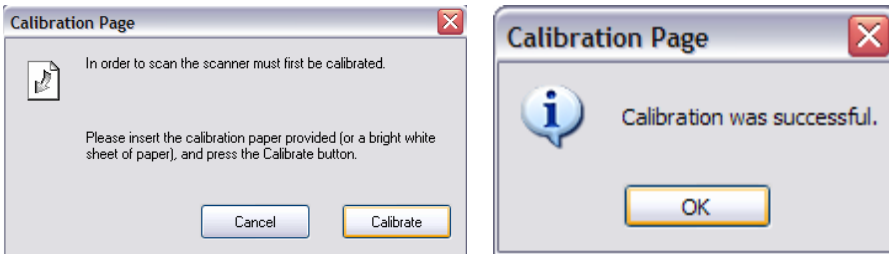
**Note:** Calibration is critical because it allows the image quality to be “balanced” for your computer and scanner combination. If you switch the computer that you use with your scanner or change scanners, you must calibrate again.

1. To open the DSmobileSCAN application, you can either double-click the Adobe PDF

shortcut icon on your desktop  or the “Taskbar tray” icon usually in the lower right-hand corner of the Windows Desktop.

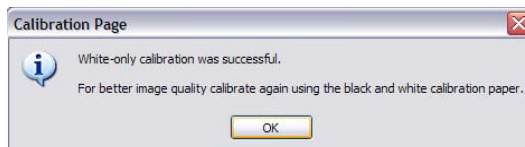


2. Once you have launched DSmobileSCAN, select the SCAN button and the step-by-step calibration instructions will appear in a succession of prompts.



This calibration process uses the special black and white calibration sheet that was included with your scanner (Visit [www.pentaxtech.com](http://www.pentaxtech.com) to order additional calibration sheets and cleaning kits). When calibrating, make sure the page with the black bars is facing down and note the direction of the arrows for proper insertion. When the calibration process has been completed successfully, you will see the message above; otherwise you will need to re-calibrate again.

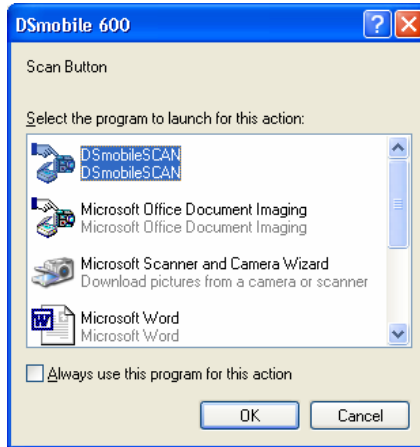
- If you switch scanners or your image quality has become unsatisfactory, you can re-calibrate your scanner by choosing the CUSTOM button in the DSmobileSCAN window and select the Calibrate button.
- If you lose or forget the black and white calibration paper that was included with your scanner, you can use any plain “White” (the brighter the “White” the better) piece of letter size (or A4) printer paper to perform the calibration. Simply fold the paper in half and insert the end opposite the fold into the scanner first when calibrating. The following message will be displayed (see below).



## ***Using Your Scanner* .....**

**Please insert documents face down.** Always press the button on top of the scanner to initiate a scanning program.

The following window will appear when you press the button on the top of the scanner. A double click on any of the programs will initiate that program.



### **Setting a Default Program**

To choose a default scanning program, just highlight the program name, click on “Always use this program for this action” and then click on “OK”. The program will subsequently automatically launch when you press the button on the top of the scanner to initiate a scan.

### **Changing Programs**

To cancel a default program, on the windows desktop:

1. Select Start: Control Panel: Scanners and Cameras (In Category View, select Printers and other Hardware: Scanners and Cameras).
2. Right click on the scanner icon, select Properties, and then select Events.
3. Click on “Prompt for which program to run.”
4. Click Apply and then OK, then Exit the Control Panel.

After this process, the “Select the program to launch for this action” (shown above) will display when the button on the top of the scanner is pressed to initiate a program.

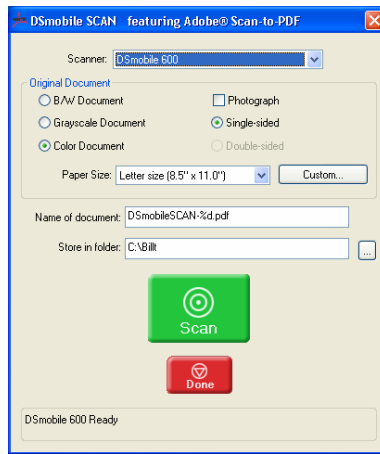
# Using Your Scanning Software.....

## DSmobileSCAN

This software will save all scans to an ADOBE ACROBAT PDF file.

### Using DSmobileSCAN as your default

The advantage of using DSmobileSCAN as your default is that as a default program it provides the ability to scan automatically. Pressing the button on top of the scanner once starts the DSmobileSCAN software and pressing it again starts a document scan.




This program gives the user the choice of selecting type of scan and paper size from the main menu (shown above) or pressing the “Custom” button to utilize the document manager control panel for more precise settings. Selecting the custom settings will put the program into a TWAIN driver (as defined on page 10) and takes you out of the actual DSmobileSCAN software application.

If the Custom button is used it cancels the automatic scan function. The user must choose the setting they wish to make custom, click on “OK” to put the program back to the scanning page, and click on the green “Scan” button to scan the page.

If DSmobileSCAN is not set as the default program, when the button on top of the scanner is pressed, a window will be displayed requiring you to choose a scanning software as shown in Using Your Scanner on page 7. The scanning process will then require the user to click on the green “Scan” button on the screen as shown above.

## Using the DSmobileSCAN icon on your desktop



An icon (  ) will appear on your desktop after DSmobileSCAN software installation. Using this icon will initiate the DSmobileSCAN software but unless DSmobileSCAN is set as your default it will put it in a “manual” mode which requires the user to click on the green “SCAN” button to initiate the scan.

If you have chosen DSmobileSCAN as your default scanning software, pressing the button on the top of the scanner after DSmobileSCAN has been launched from the icon will start the scan process.

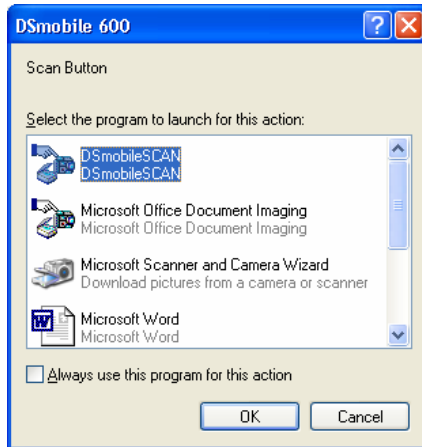
If you have not chosen DSmobileSCAN as your default scanning software, pressing the button on the top of the scanner after DSmobileSCAN has been launched from the icon will display the “select the program to launch for this action” window. You can now choose another program from the menu. Although the DSmobileSCAN window will show in the background, it will not interfere with the other scanning application you choose. To close the DSmobileSCAN window, you must click on the delete “X” at the top of the DSmobileSCAN screen. Closing the DSmobileSCAN window will not interfere with your current software application.

If you want to use DSmobileSCAN as your default scanning software, Pentax recommends that you don’t use the desktop icon, just press the button on the scanner, select DSmobileSCAN, click on “Always use this program for this action,” and click OK. From then on you can scan by pressing the button on the scanner twice.

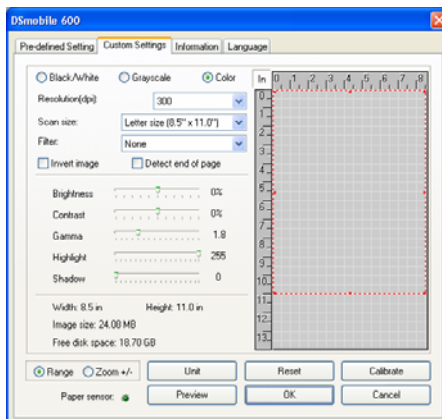
## TWAIN

The TWAIN driver for the DSmobile 600 is automatically installed when the driver installation CD installs the Windows drivers. This TWAIN driver defines communication and data structures between software applications on your PC and the DSmobile 600.

All software that appears in the “select the program to launch for this action” window (shown below) will be TWAIN compliant software that is compatible with the DSmobile 600 scanner and allows scanning from that software program. Each program will initiate scanning differently. Please follow instruction according to the software program you are using.



If the software you have chosen uses the TWAIN interface instead the application software interface, the TWAIN control panel (shown below) will appear. The TWAIN interface will allow you to control all the settings of the scanner. This type of “fine-adjustment” may be required for some of your document scanning needs.



Please notice the Page Tabs at the top of the TWAIN control panel; they are: **Pre-defined Setting**, **Custom Settings**, **Information**, and **Language**. Take a moment to explore these Tabs and their functions.

## **PageManager®**

This program makes it easy to scan, share, and organize your photos and documents. It helps you not only convert piles of paper into organized digitized files, but also lets you view, edit, send, and back-up files in many formats.

To install PageManager, browse to the CD root directory on the installation CD, find the PageManager 7 folder, open it and double click on the setup.exe file. Follow the on-screen instructions. Refer to the “help” file included with this program for further use instructions.

## **TWAIN for Apple MAC OSX**

This driver is not included on the Installation CD for the DSmobile 600. This driver can be found under DSmobile drivers listed at [www.pentaxtech.com](http://www.pentaxtech.com).

## ***Tips & Cautions*** .....

The DSmobile 600 scanner provides long and productive service. We encourage you to follow the suggestions below to improve the convenience and quality of your scanning and document management experience.

- ☹ Please do not load stapled items or pages into the DSmobile 600.
- ☹ Please do not scan documents that have chipped or un-dried Wite-Out®.
- ☹ Please do not insert documents with any type of adhesive material, even POST-IT® notes.



- ☺ Make sure the leading edge of your documents is very straight (not wrinkled or having folded corners) and is inserted level with the intake slot. *If your document does have a fold, sharp-bend or is wrinkled, please use the document sleeve included in the scanner package.*
- ☺ Clean the scanner with the included cleaning paper and 70% isopropyl alcohol (not included). Place a few drops of the alcohol in the middle of the cleaning paper then go to the **Calibrate** Menu and select **CLEAN**. Your scanner will automatically pass the cleaning material over the internal image sensor to clean it.
- ☺ Document sleeves can be easily cleaned with a clean cloth and Windex® window cleaner. This will effectively remove finger prints, smudges and roller marks from the sleeve.

## ***Technical Support*** .....

### ***FREE INFORMATION BY E-MAIL & WEB***

Visit our Web site at [www.pentaxtech.com](http://www.pentaxtech.com) . Click the “DSmobile Scanners” section where you can access: Features, Specifications, and Compatibility; FAQs, Warranty and Guaranty information; Brochures, Manuals, and Product Software download information.

### ***TECHNICAL SUPPORT***

Pentax recommends that you go to [www.pentaxtech.com](http://www.pentaxtech.com) , click on “Contact us”, and use either the web contact form or e-mail your question to Technical Support at [info@pentax.com](mailto:info@pentax.com) . Either method will send your request immediately to technical support personnel.

### **Telephone Contact\***

US: 1-800-877-0155 (8:00 A.M. - 5:00 P.M. Mountain Time Monday - Friday)

Europe: +32.2.306.1190

\*Telephone support calls will usually be responded to within 1 business day, however we strongly suggest that you make contact via e-mail first, provide an explanation of the problem you are experiencing, and a call back number if it is necessary for us to speak to you directly.

## ***Product Warranty Information*** .....

Statement of Limited Warranty for the United States, Canada, and European Economic Community:

**Product – DSmobile 600 Document Scanner**

**Warranty Period – 1 year**

The manufacturer warrants that each DSmobile 600 is free from defects in materials and workmanship and conforms to the manufacturer’s published specifications for a period of one (1) year. The warranty period commences on the date of purchase, as evidenced by the original sales receipt.

### **Extent of Warranty:**

The warranty does not cover the repair or exchange of scanners resulting from misuse, accident, modification, unsuitable physical or operating environment, improper maintenance or failure caused by a product for which the manufacturer is not responsible. The warranty is voided by removal or alteration of scanner parts or identification labels.

### **Items not covered by the warranty:**

Host computer operating systems, application programs not provided by Pentax, or hardware configurations.

### **Warranty questions?**

Please contact Technical Support (see back page).

**Pentax Imaging Company**

600 12<sup>th</sup> Street, Suite 300  
Golden, Colorado 80401  
Main Number 303-799-8000 (1-800-877-0155)

**Pentax Technologies Europe, nv**

Weiveldlaan 3-5  
1930 Zaventem (Belgium)  
Phone: +32.2.306.1190  
Fax: +32.2.306.1199

For Updated Drivers and User Guides:

<http://www.pentaxtech.com/Products/scanners.html>